

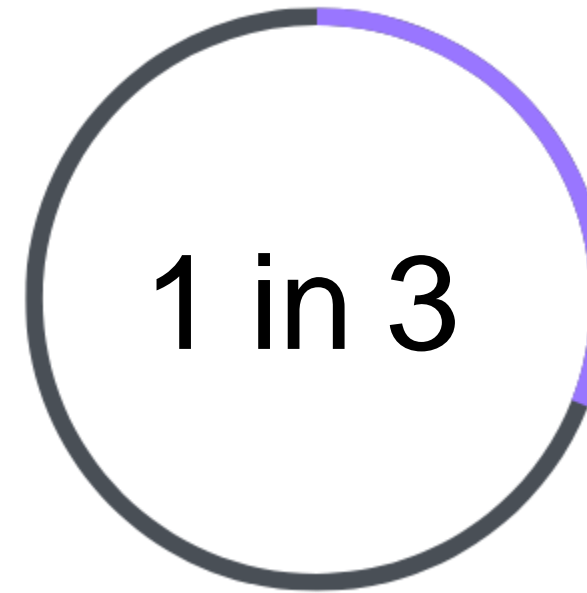


School Mental Health in Alabama + Partnering with Schools

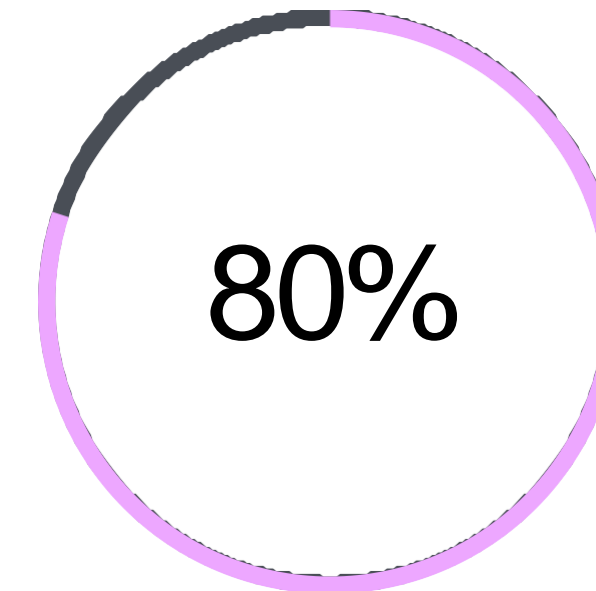
Quantifying the Problem



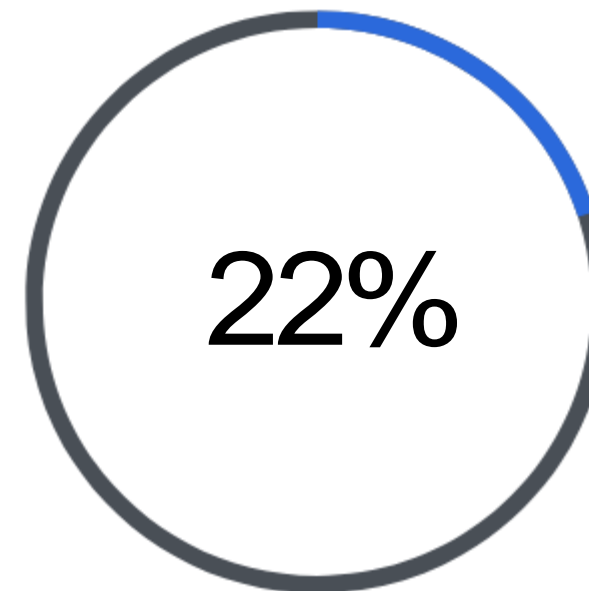
Per the most recent CDC statistics...



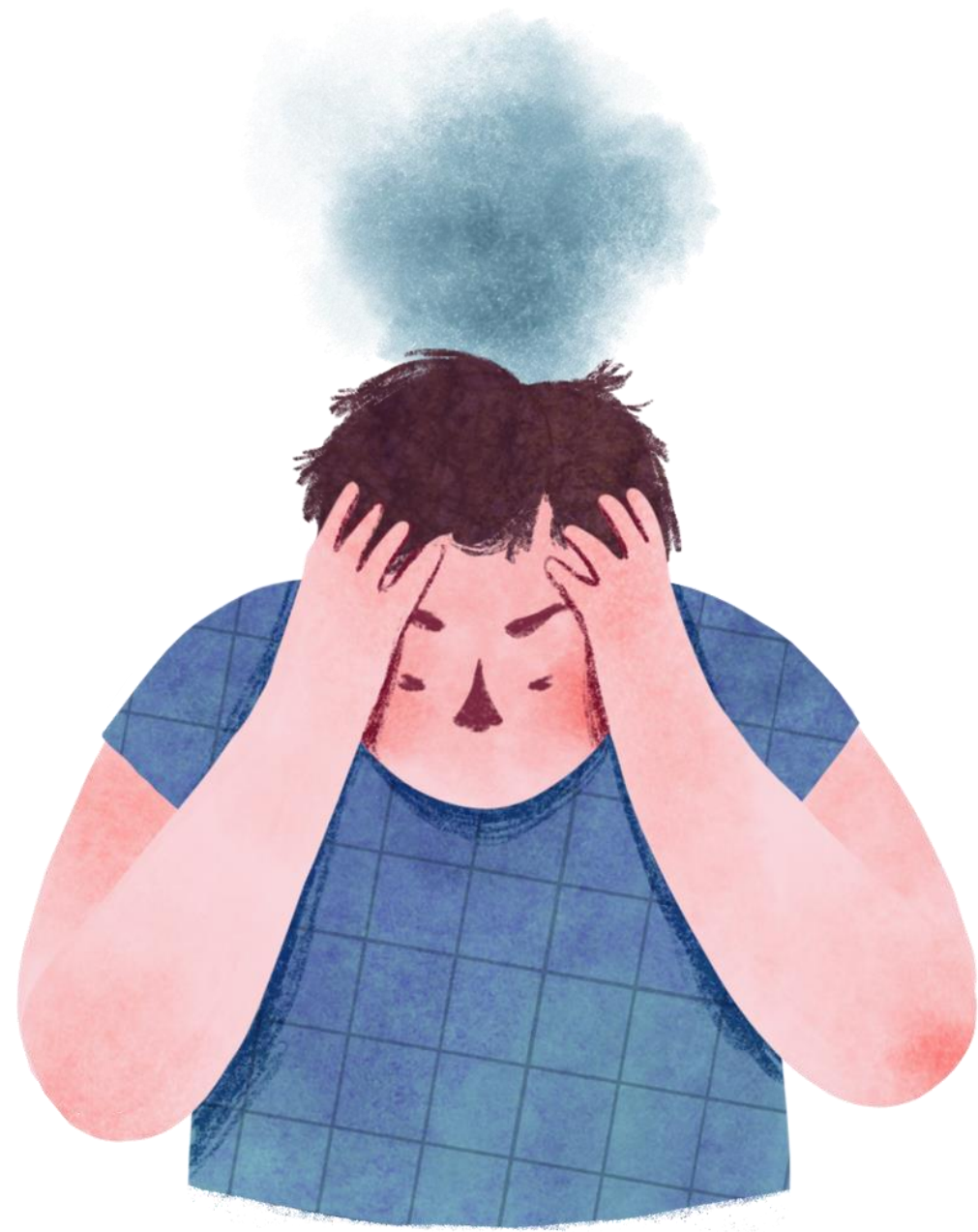
students have
experienced poor mental
health



of children with a
mental health
disorder do not
receive care from a
mental health
provider



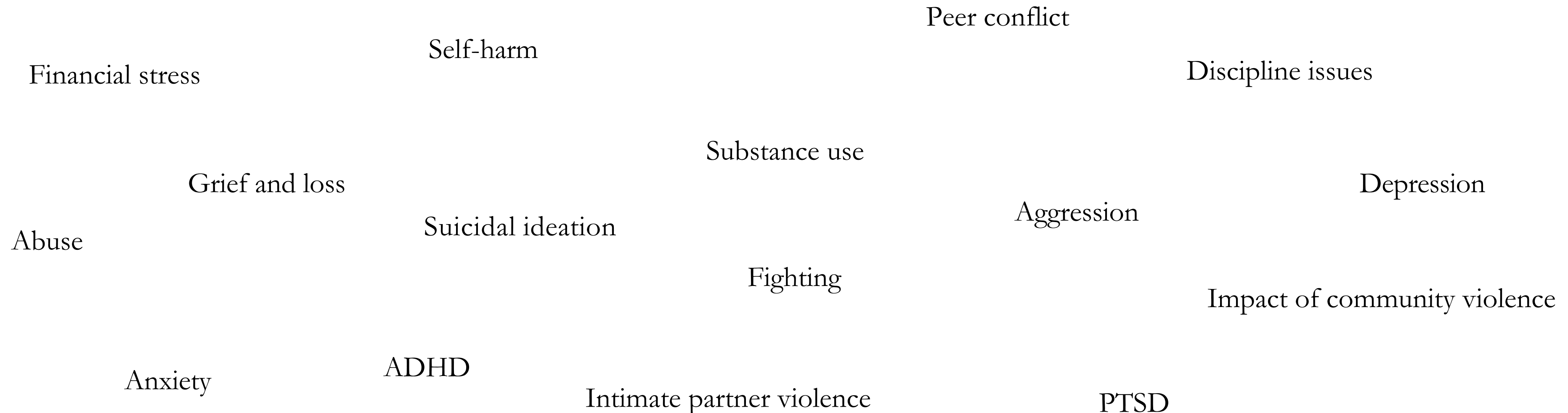
of all teens seriously considered
attempting suicide and 10% of teens
attempted suicide



Suicide is the second leading
cause of death for adolescents
ages 13-19.



What does mental health look like in schools?



Alabama's Solution:

Beginning in 2020, Alabama placed Mental Health Service Coordinators in school districts across the state. In year three of the program, all school districts could receive funds for a MHSC.



Role + Data:

Role: Connect mental health resources to mental health needs for students and staff

Data to watch:
Attendance, discipline,
promotion power



Challenges:

- One per district no matter the district's size
- Still not fully funded by the state – districts have to make up the rest of the funding

The Impact

of supporting student
mental health in schools



SAFETY

Improves physical and psychological safety of students and schools

ATTENDANCE + RETENTION

Increases attendance rates, decreases student dropout rates

ACADEMIC ACHIEVEMENT

Increases academic achievement

STUDENT BEHAVIOR

Decreases student discipline issues

TEACHER TURNOVER

Decreases teacher turnover because of support systems in place

SCHOOL CULTURE + CLIMATE

Increases positive school culture and climate

EMPOWERMENT

Increases empowerment of students, teachers, and administrators as needs are met and all are more empowered

Tips for Partnering with Schools

Tip #1: Find your person!

Schools are busy, and they are thinking about academics. Find the person who believes in what you are doing, and stick to them!

Might be a counselor, assistant principal, school social worker, mental health coordinator, teacher, interventionist, principal, central office director...



Tips for Partnering with Schools

Tip #2: Hear their needs!

Start by hearing what the school needs. Find out about the biggest challenges their students face. Learn about the gaps in what already exists.

Make sure they feel like you are on their team!



Tips for Partnering with Schools

Tip #3: Tell your story!

BRAG on yourself! Tell the story of your organization and explain how you can meet their needs in a unique way. Talk about your expertise. Tailor your offerings to meet their needs if possible.

List your stats, tell your successes, share the vision!



Tips for Partnering with Schools

Tip #4: Find ways to show up!

Invest in the community! Come to school sporting events, school performances, community meetings, student awards ceremonies, graduations.

Celebrate your school point of contact and anyone who helps you at the school with small tokens of appreciation. Invite school staff to your organization's events.



Tips for Partnering with Schools

Tip #5: Communicate results!

Take pictures and send them to the school. Tag the school/district on social media posts. Ask about sharing results in a presentation to school staff, district staff, or school board members.

The school wants to see what you are doing!



FOOD TRUCKS,
DOOR PRIZES,
SCHOOL
PERFORMANCES,
YARD GAMES, 95.7
JAMZ, AND MORE!



RESOURCES AT RAILROAD

A COMMUNITY MENTAL HEALTH
AND WELLNESS FAIR

Tuesday, March 18th
4:00 PM - 6:00 PM
Railroad Park



SPONSORED BY SCHOOL MENTAL HEALTH COORDINATORS FROM:
Birmingham City, Alabama Aerospace and Aviation High School, Alabama
School of Fine Arts, Bessemer, Fairfield, Homewood, Hoover, Jefferson
County, Leeds, Magic City Acceptance Academy, Midfield, Mountain Brook,
Pelham, Tarrant, Trussville, Vestavia Hills

CAMIONES DE
COMIDA,
RENDIMIENTO
ESCOLAR, JUEGOS EN
EL PARQUE, ESTACION
DE RADIO 95.7 JAMZ, Y
MAS!



RECURSOS EN RAILROAD

FERIA DE RECURSOS DE SALUD
MENTAL Y BIENESTAR

Martes, 18 de Marzo
4:00 PM - 6:00 PM
Railroad Park



PATROCINADO POR COORDINADORES DE LA ESCUELA DE SALUD MENTAL EN:
Ciudad de Birmingham, Alabama Aerospace and Aviation High School,
Alabama School of Fine Arts, Bessemer, Fairfield, Homewood, Hoover,
Condado de Jefferson, Leeds, Magic City Acceptance Academy, Midfield,
Mountain Brook, Pelham, Tarrant, Trussville, Vestavia Hills



Questions?

Contact Emily Herring

Email: eherring@fairfieldk12.org

Phone: 205-264-9665